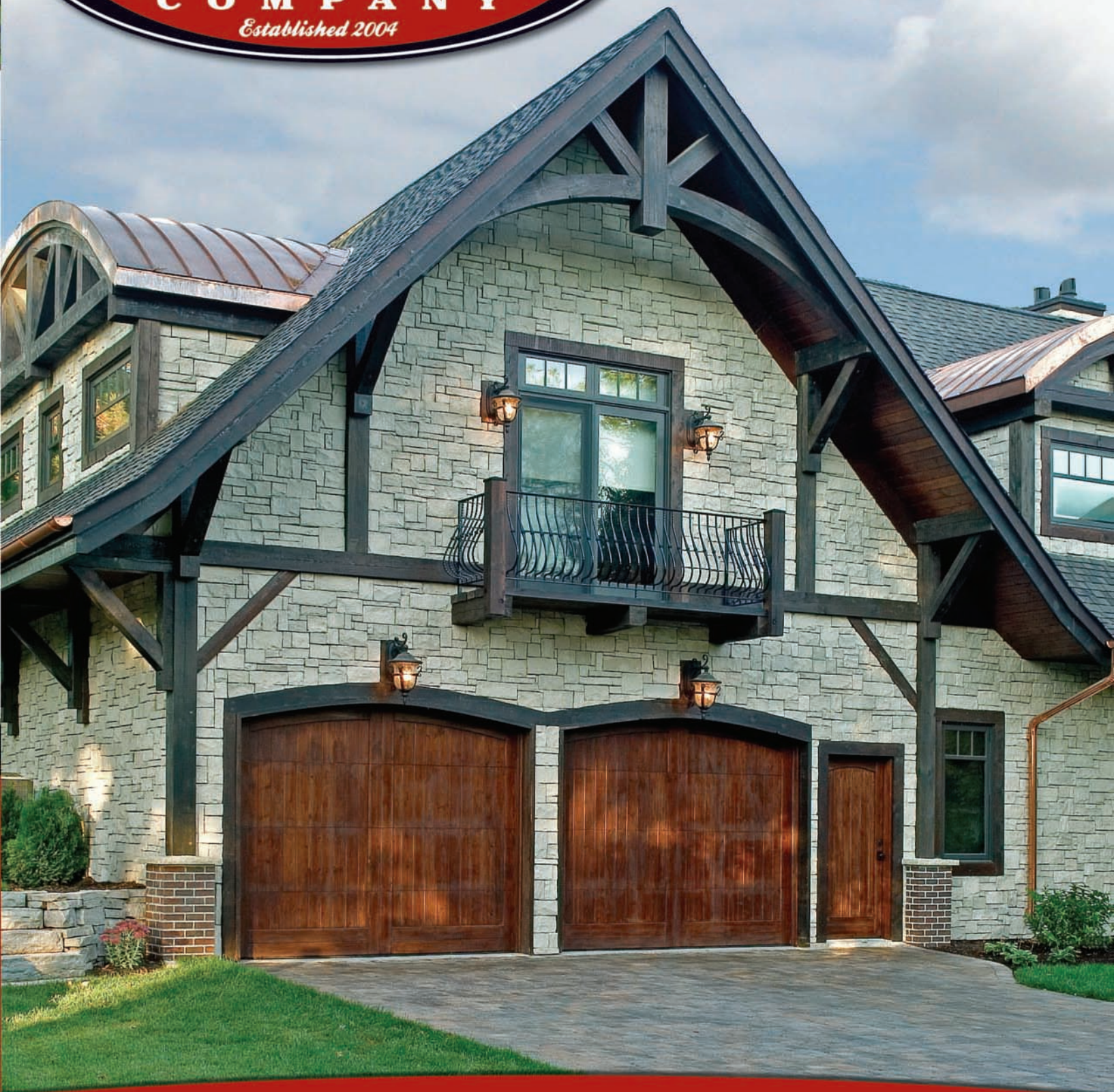




Craftsman Series

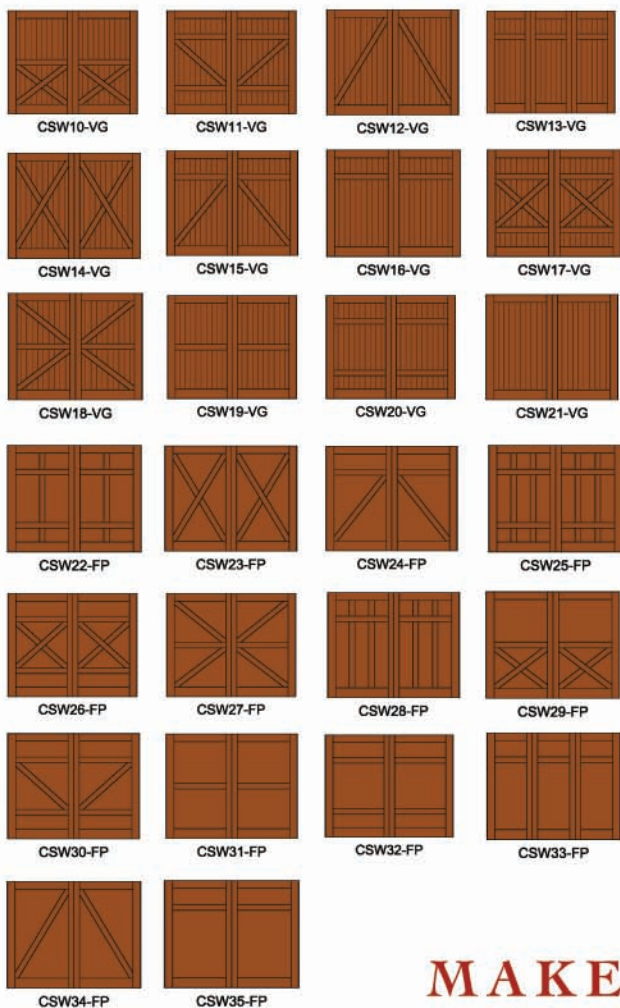


www.greatnortherndoor.com

Choose your design:



Square Wood Door Designs:

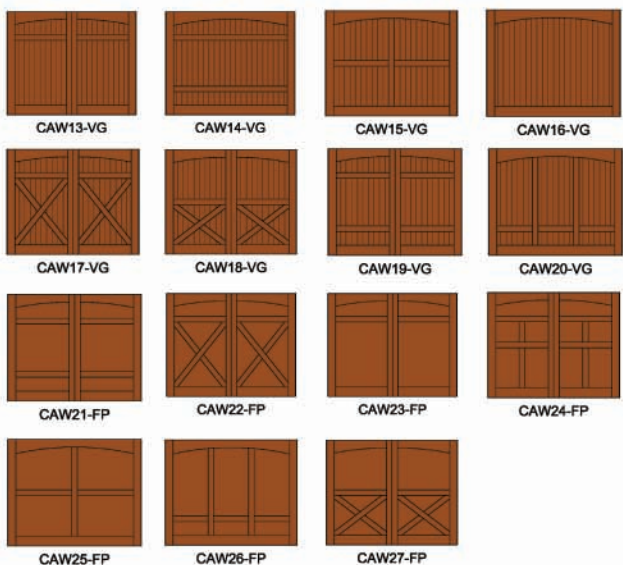


Square Glass Door Designs:

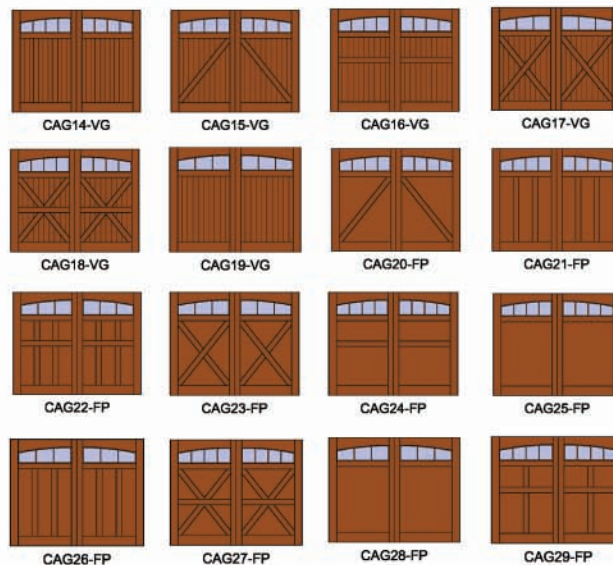


MAKE AN ENTRANCE

Arched Wood Door Designs:



Arched Glass Door Designs:



NOTE* Flat panel (FP) only available in paint grade plywood. Plywood used for the flat panel will differ from the wood species chosen and may take stain differently.

Craftsman Series

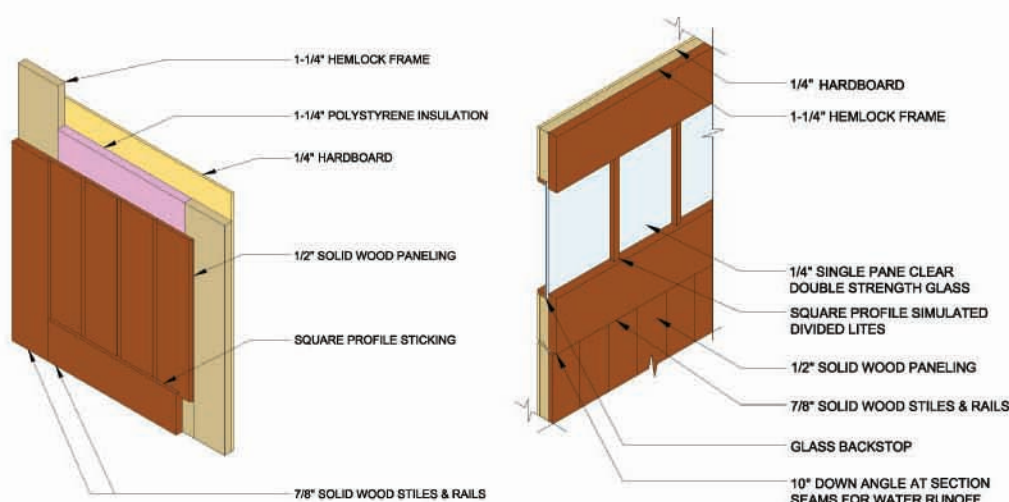
Add curb appeal and the look of a custom door at an affordable price.

features:

- 3 standard types of wood material: Clear Western Red Cedar, Knotty Western Red Cedar, or Douglas Fir.
- Premium 1/4" hardboard interior panel.
- 2 1/4" insulated door.
- Panels available in 5" v-groove, 3" v-groove, and flat panel (paint grade).
- Over 75 available designs
- 1/4" clear single pane double strength glass: additional glass options available.
- Square profile on rails and muntins.
- Door sizes available in 6'-18' widths and in 6'-12' heights.
- 2 year warranty.



Craftsman Series features:



Choose your type of wood:



Western Red Cedar-Clear exhibits a variation of colors from amber to reddish brown, and has little or no knots. Cedar has a high degree of natural resistance to decay and attack by insects.



Western Red Cedar-Knotty exhibits a range of tone variations along with knots to create a more rustic (natural look) to the wood. Cedar has a high degree of natural resistance to decay and attack by insects.



Douglas Fir exhibits prominent grain and is a good candidate to be painted or stained, with its fast growth and durability douglas fir has become a very popular "Go Green" wood.

Choose your glass:



1/4" Clear Single Pane
Double Strength Glass
Standard



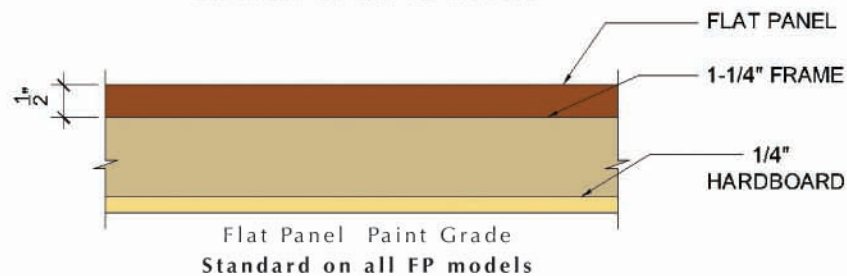
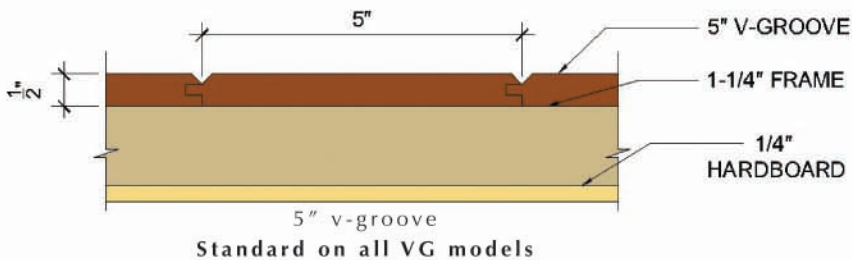
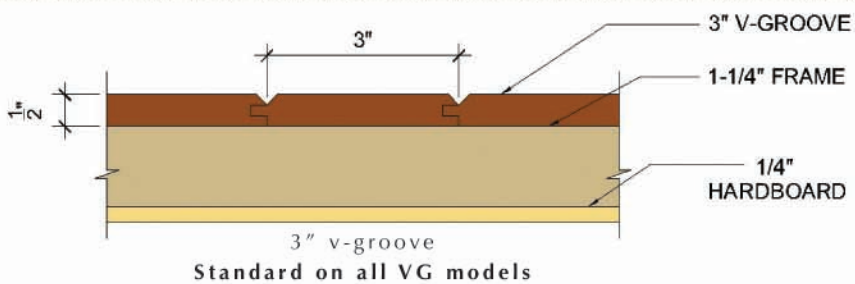
1/2" Clear
Insulated Glass
Optional



1/2" Clear Insulated
Low-E Glass
Optional

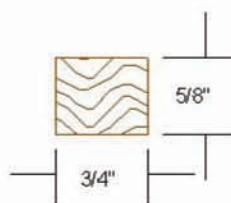


Choose your surface:



muntins profile:

Square



Mission / Square
3/4" Wide
Standard

prefinishing:

Sikkens Cetol 1 & 23 Plus stain color options are shown below.

