

LASTING QUALITY AND DISTINCTION



DOOR DESIGN

QUALITY MAINTENANCE FREE CONSTRUCTION



THE RP-25 OFFERS lasting quality and distinction with affordability. Durable 25-gauge galvanized steel sections with micro ribs deliver the strength you expect. Stylish wood grain embossed raised panels enhance your home's appearance.

RAISED PANEL DETAIL

OPTIONAL ITEMS

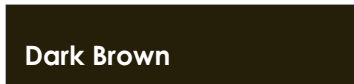
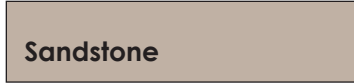
R VALUE
6.7*



- Our optional Polystyrene insulation features a laminated High Impact Thermal Styrene (HITS) backer.
- Windows are available in single or thermal pane. For a customized look choose from a variety of window inserts.
- Special Headroom Track for limited space situations.
- "Kwik Wind" system, and exterior keyed lock system are also available.

*Calculated R values are in accordance with DASMA guidelines under TDS - 163 and applies to optional HITS insulation only.

AVAILABLE COLORS*



*Printed colors may vary slightly from actual door colors.

20 YEAR LIMITED RUST WARRANTY

North Central Door Company, LLC warrants to the original consumer purchaser all door sections of its steel garage doors against rust-through due to the paint finish cracking, checking or peeling (losing adhesion) for a period of twenty (20) years from the date of delivery, when installed in accordance with the instructions from the manufacturer. Claims concerning warranty must be made to the North Central Door dealer from who purchased within the warranty period. This warranty is exclusive and in lieu of all other warranties, either expressed or implied. In no event shall seller be liable for special or consequential damages. However, some states do not allow the exclusion of incidental or consequential damages. If you live in a state that does not allow said exclusions, the above limitation may not apply to you.

1 YEAR LIMITED DEFECT WARRANTY

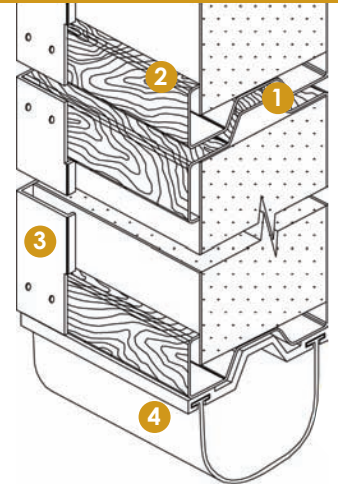
North Central Door Company, LLC warrants to the original consumer purchaser all door sections of its steel garage doors against defects in workmanship or materials for a period of one (1) year. Should any defects occur, North Central Door Company shall, upon notification, correct any deficiency at their option, by repairing or replacing any defective section or sections. This warranty does not include normal wear, damage beyond the manufacturer's control, or replacement labor.

TIMBERLAND COLLECTION INFORMATION

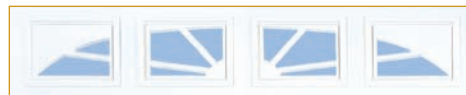
RP-25

WOOD GRAIN RAISED PANEL STEEL DOORS

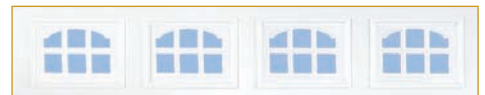
- 1 Tongue and Groove section joints create a weather-resistant seal against rain, snow and wind.
- 2 Strong 25-gauge embossed hot-dipped galvanized steel. The pre-finished exterior and interior are then coated with a baked-on polyester primer and acrylic finish coat, providing a durable, long-lasting appearance.
- 3 The 18-gauge hot-dipped galvanized end and center stiles are mechanically fastened for strength and a neat appearance. Absolutely no welds to rust.
- 4 Our tough "U"-shaped bottom weather-seal helps guard against the elements.



WINDOW OPTIONS



SUNBURST



CASCADE



COLONIAL



PLAIN



CATHEDRAL



SAVANNA



SHERWOOD

TRACK REQUIREMENTS

Add 2" for electric operator	HEADROOM		SIDE ROOM
	EXTENSION	TORSION	
STANDARD LIFT 12" Radius	10"	11"	4 1/2"
STANDARD LIFT 15" Radius	12"	13"	4 1/2"
LOW HEADROOM - REAR	4"	4"	6"
LOW HEADROOM - FRONT	N/A	9"	6"

