



Energy Efficient Polyurethane Insulated Sectional Doors

Amarr® 2042 / Amarr® 2742 / Amarr® 2741

Amarr Polyurethane insulated sectional doors are our top-of-the-line high R-value doors.

Constructed using 2" or 1-3/8" foamed-in-place polyurethane insulation which creates a strong monolithic panel that is energy efficient. The Amarr 2042 has a 20-gauge steel front skin that provides a perfect option for heavy industrial applications.

Each model is secured with standard 14-gauge, galvanized steel hinges. The interior skin of each section has two continuous horizontal 20-gauge reinforcing strips. The section joint is thermally broken and chemically bonded with a pressure-sensitive adhesive sealant.

An EPDM rubber weather seal further enhances the performance of the joint.



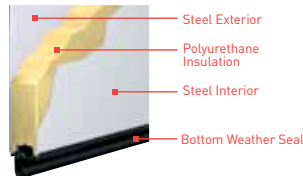
CONSTRUCTION

R-Value 19.40 Amarr 2042
Extra Heavy-duty, 2" 20-gauge foamed-in-place door

R-Value 19.40 Amarr 2742
Heavy-duty, 2" foamed-in-place door

R-Value 14.46 Amarr 2741
Medium-duty, 1-3/8" foamed-in-place door

**TRIPLE-LAYER
Steel + Insulation + Steel**



Track: All Amarr doors are available with both 2" or 3" track in Standard Lift, High Lift, Vertical Lift, Low Headroom, and Follow the Roof Pitch. Custom track configurations are also available. For drawings and more information, please visit www.amarr.com.

Springs: Torsion springs are oil tempered, helical wound and custom computed for each door for a minimum 10,000 cycle life. Optional springs are available up to 100,000 cycle life.

Hardware: Amarr hardware includes minimum 14-gauge galvanized steel hinges and 13-gauge galvanized steel track brackets. All rollers have minimum 10-ball bearings.

SPECIFICATIONS

SPECIFICATIONS	Extra Heavy-duty	Heavy-duty	Medium-duty
	Amarr 2042 formerly Amarr 2720	Amarr 2742 formerly Amarr 2700	Amarr 2741 formerly Amarr 1350
STEEL THICKNESS (Front/Back)	20-ga / 27-ga	27-ga / 27-ga	27-ga / 27-ga
PANEL DESIGN	Flush	Pencil Groove	Pencil Groove
STEEL EMBOSSEMENT	Stucco	Stucco	Stucco
DOOR THICKNESS	2" (5.1cm)	2" (5.1cm)	1-3/8" (3.5cm)
CONSTRUCTION LAYERS	Triple	Triple	Triple
INSULATION¹	Polyurethane	Polyurethane	Polyurethane
R-VALUE²	19.4	19.4	14.46 ^{2A}
MINIMUM WIDTH	5'	5'	5'
MAXIMUM WIDTH	32' 2"	32' 2"	18' 2"
MINIMUM HEIGHT	7'	7'	7'
MAXIMUM HEIGHT	24' 1"	24' 1"	14' 1"
PASS DOOR	•	•	
WIND LOAD³ AVAILABLE	•	•	•
PAINT FINISH WARRANTY⁴	10 Years	10 Years	10 Years
WORKMANSHIP/HARDWARE WARRANTY⁴	1 Year	1 Year	1 Year

¹ Insulation has passed self-ignition, flamespread and smoke developed index fire testing. ² Calculated door section R-value is in accordance with DASMA TDS-163. ³ It is your responsibility to make sure your garage door meets local building codes. ⁴ For complete warranty details, visit amarr.com or contact your local Amarr dealer.

^{2A} Based on independent laboratory test results

OPTIONAL PASS DOOR



Available for Amarr 2742 and Amarr 2042 only in door sizes up to 16'2" wide x 16' tall. Wind Load option not available.

Door Latch (Interior View)

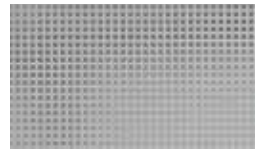
PANEL OPTIONS



PENCIL GROOVE WITH STUCCO EMBOSSEMENT
2042 is Flush with stucco embossment.

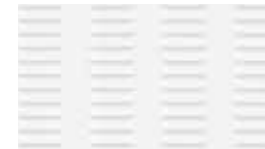


ALUMINUM FULL VIEW*



PERFORATED ALUMINUM†
0.312" square perforations on 1/2" centers

Available Fall 2015



LOUVERED ALUMINUM*
7 columns of (12) 3" x 3/4" vents on a 4' x 24" panel

†Mill finish only. Custom powder coat available Fall 2015
*Available in all Aluminum color options for Amarr 2042 and Amarr 2742 only

STEEL COLORS

Amarr steel doors are pre-painted; for custom colors, exterior latex paint must be used. Visit amarr.com for instructions on painting. Actual paint colors may vary from samples shown.



WHITE



SANDTONE
Amarr 2742 only



COMMERCIAL GRAY
Amarr 2742 only



COMMERCIAL BROWN
Amarr 2742 only

Amarr 2742 and Amarr 2741 use a brighter tone of white color than Amarr 2042.

ALUMINUM COLORS

Actual color may vary from sample shown.



CLEAR ANODIZED



ANODIZED DARK BRONZE



ANODIZED BLACK



WHITE POWDER COAT

WINDOW OPTIONS



26" x 13" DOUBLE INSULATED ACRYLIC WINDOWS WITH BLACK FRAME



24" x 6" DOUBLE INSULATED ACRYLIC WINDOWS WITH BLACK FRAME



24" X 12" INSULATED GLASS Available with either a black or white frame.

ENTRE/MATIC

Entrematic
165 Carriage Court
Winston-Salem, NC 27105
800.503.DOOR
www.amarr.com

FOR TECHNICAL
QUESTIONS:
1.866.366.4814



Entrematic products may be the subject of one or more U.S. and/or foreign, issued and/or pending, design and/or utility patents. Entrematic and Amarr as words and logos are trademarks owned by Entrematic Group AB or companies within the Entrematic Group. Technical data subject to change without notice.
©Entrematic Group AB 2015. All rights reserved. Printed in USA Form #6210915/15M/GVS