



# Architect Series

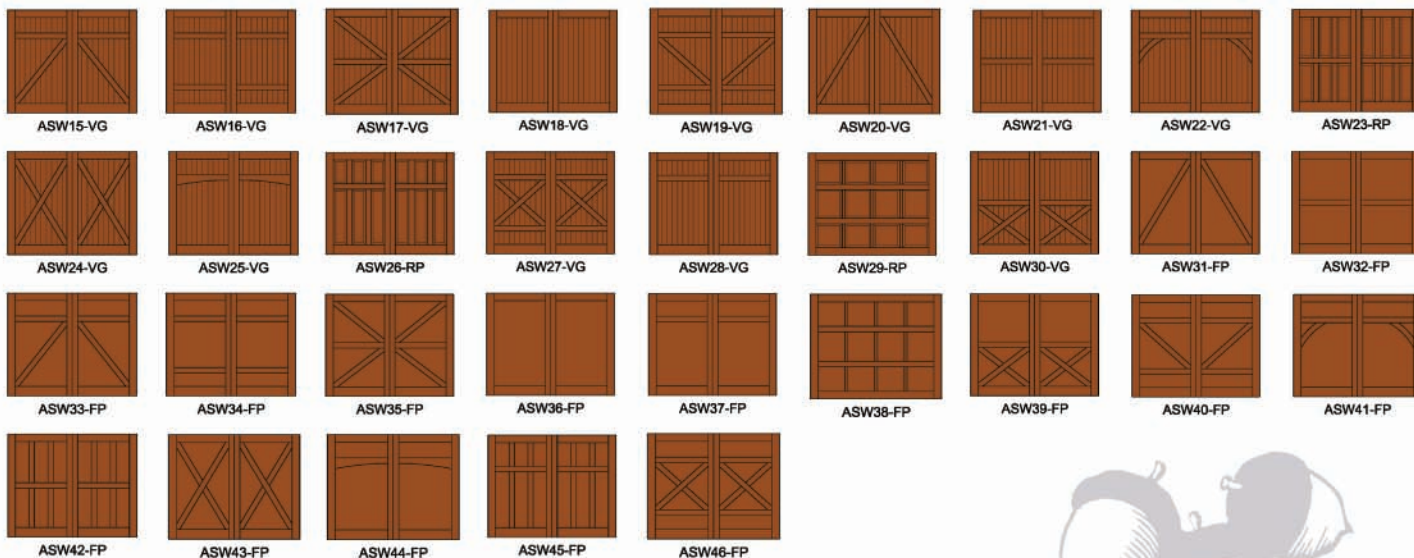


[www.greatnortherndoor.com](http://www.greatnortherndoor.com)

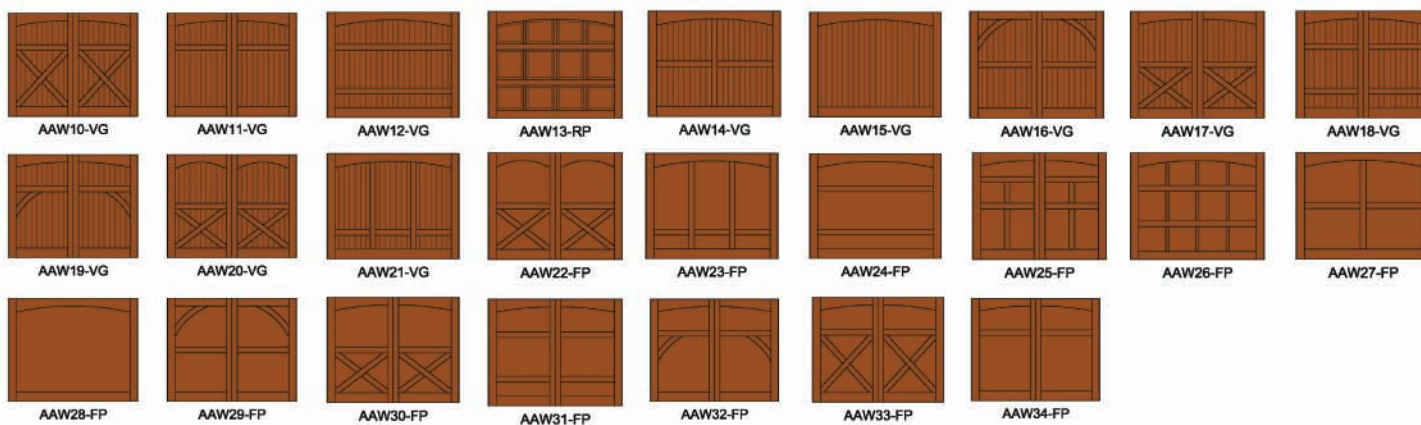


# Choose your design:

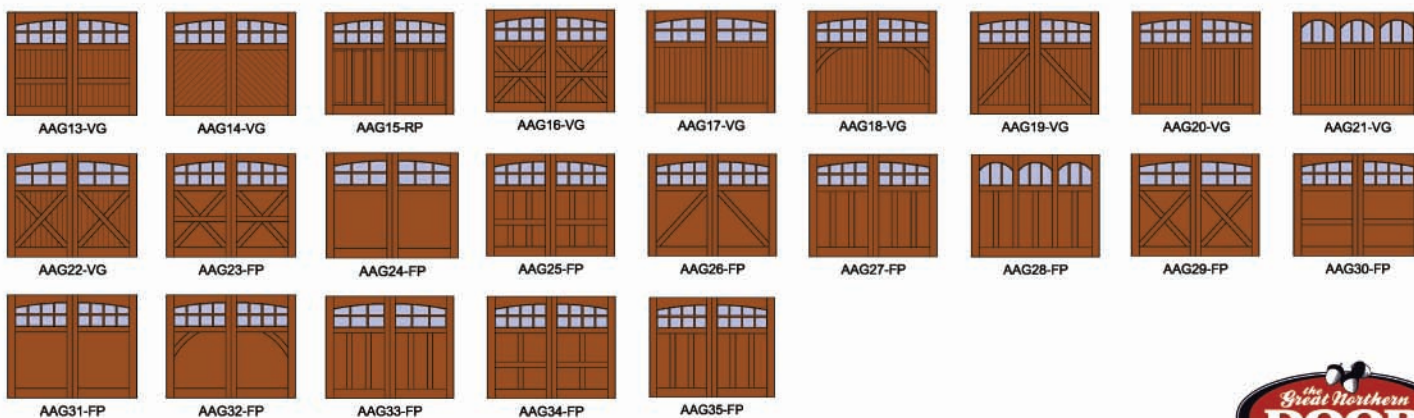
## Square Wood Door Designs:



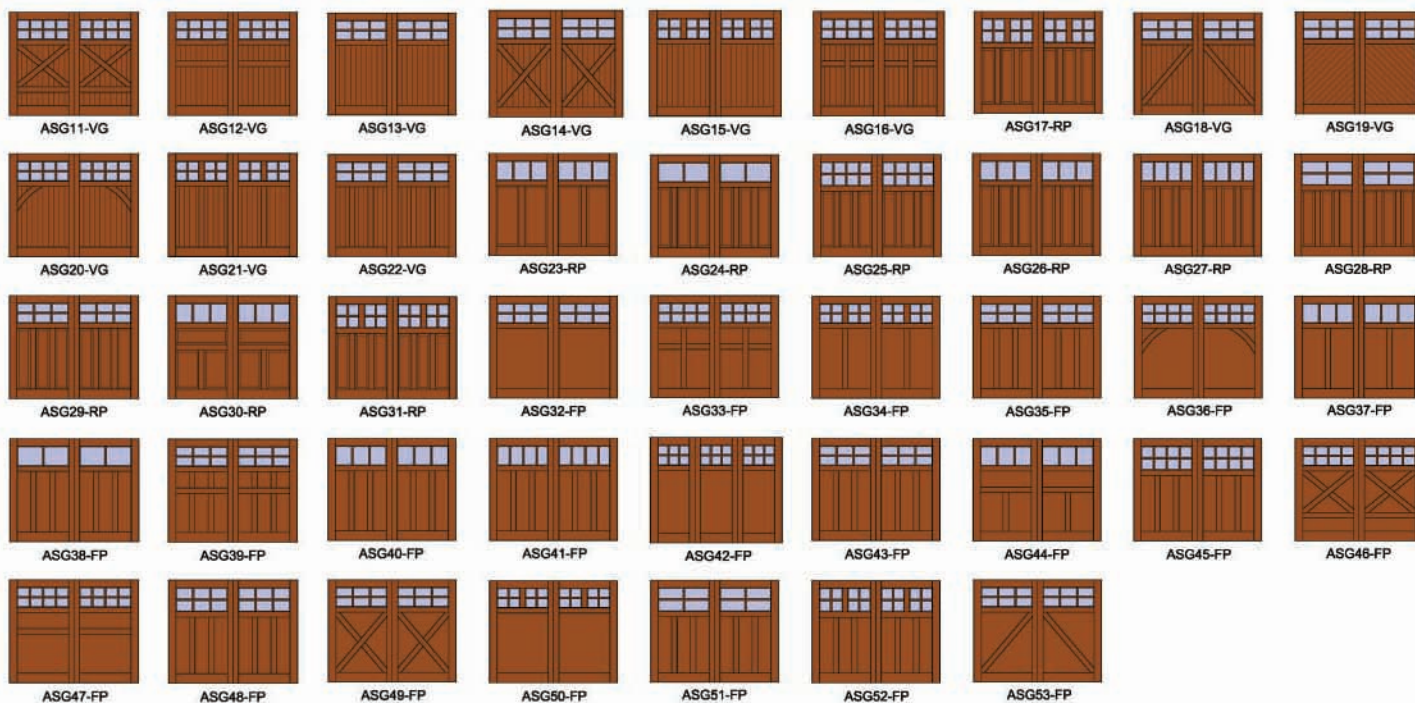
## Arched Wood Door Designs:



## Arched Glass Door Designs:



## Square Glass Door Designs:



NOTE\* Flat panel (FP) only available in paint grade plywood. Plywood used for the flat panel will differ from the wood species chosen and may take stain differently.

## Choose your glass:



1/2" Clear  
Insulated Glass  
**Standard**



1/2" Gray Tint  
Insulated Glass  
**Standard**



1/2" Bronze Tint  
Insulated Glass  
**Standard**



Bronze Solar Cooled  
Reflective Glass  
**Optional**



Gray Solar Cooled  
Reflective  
**Optional**



English Reeded  
**Optional**



Silvit  
**Optional**



Krinkle  
**Optional**



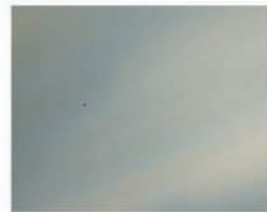
White Lami  
**Optional**



Hammered  
**Optional**



Seedy  
**Optional**



Gray lite  
**Optional**



\*All glass available in 1/4" single pane double strength glass, 1/2" insulated glass and Low-E insulated glass.



## Choose your type of wood:



**Western Red Cedar-Clear** exhibits a variation of colors from amber to reddish brown, and has little or no knots. Cedar has a high degree of natural resistance to decay and attack by insects.



**Western Red Cedar-Knotty** exhibits a range of tone variations along with knots to create a more rustic (natural look) to the wood. Cedar has a high degree of natural resistance to decay and attack by insects.



**Douglas Fir** exhibits prominent grain and is a good candidate to be painted or stained, with its fast growth and durability douglas fir has become a very popular "Go Green" wood.



**Knotty Alder** is light brown in color with yellow and peach hues. It is a "soft" hardwood that has the strength of maple but the rustic characteristics of pine.



**African Mahogany** has a variety of reddish brown tones with close grain pattern, which makes this species an ideal choice for creating a rich sophisticated look.



**Oak** has a light biscuit color with distinctive grain patterns. It is like cedar as it has a natural resistance to decay and attack by insects.

Other wood species are available upon request.





# Architect Series

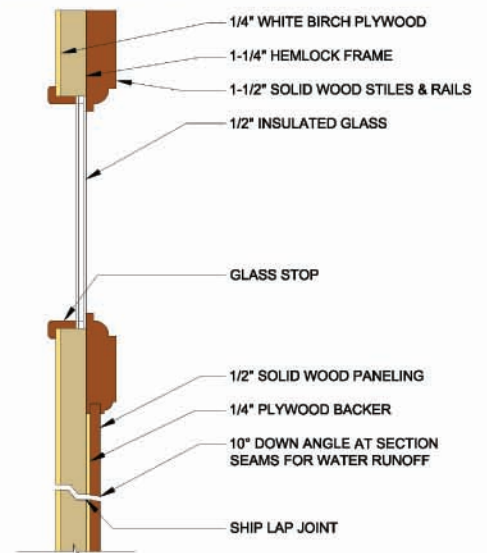
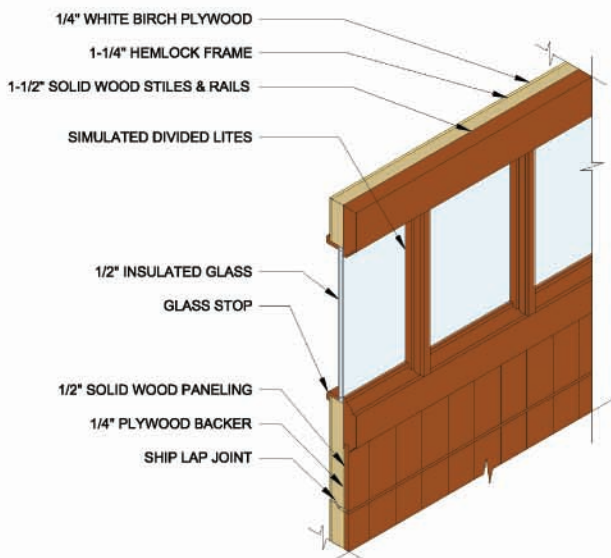
Endless design-build capabilities and unmatched quality.

## features:

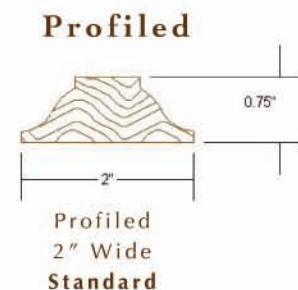
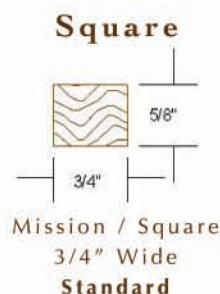
- 3 standard types of wood material: Clear Western Red Cedar, Knotty Western Red Cedar, or Douglas Fir, with optional wood species available in Knotty Alder, Oak and African Mahogany.
- Any wood species available upon request.
- Premium 1/4" stain grade white birch interior panel which can be stained or painted.
- 3" insulated door.
- Over 120 standard designs or create your own custom design.
- Panels available in 5" v-groove, 3" v-groove, beadboard, and flat panel (paint grade).
- Standard 1/2" clear, gray, or bronze double pane insulated glass: (additional glass options available).
- Profiled or square profile on rails and muntins.
- Molding drip cap on bottom of all panels.
- Any door sizes available.
- 6 year warranty.



## Architect Series features:



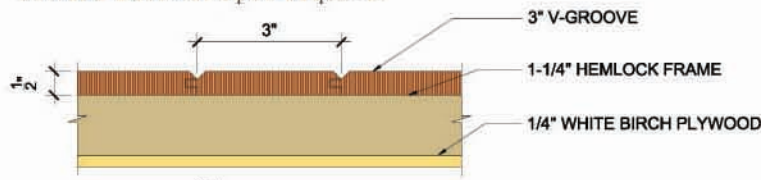
## Choose your muntins profile:



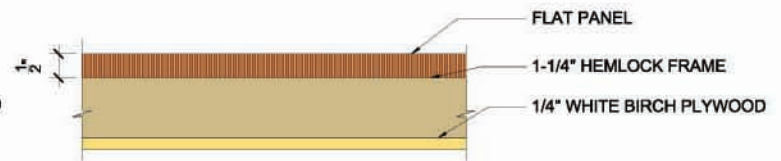


# Choose your surface:

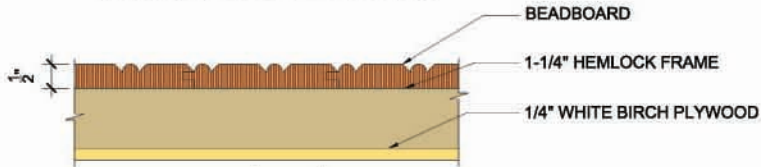
Any of our 5 surface options come standard on the Architect Series but we can accommodate almost any other surface material upon request.



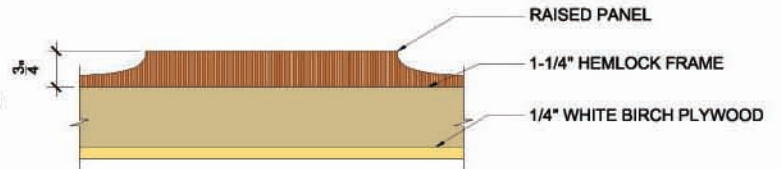
3" v-groove  
Standard on all VG models



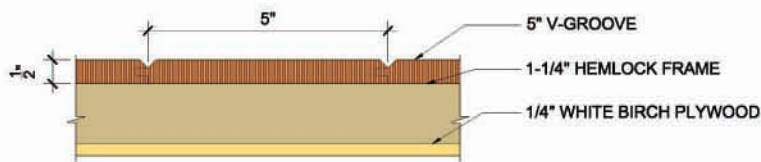
Flat Panel Paint Grade  
Standard on all FP models



Beadboard  
Standard on all VG models



Raised Panel  
Standard on RP models

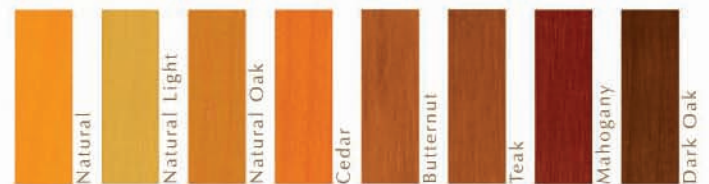


5" v-groove  
Standard on all VG models



## prefinishing:

Sikkens Cetol 1 & 23 Plus stain color options are shown below.



MAKE AN ENTRANCE

